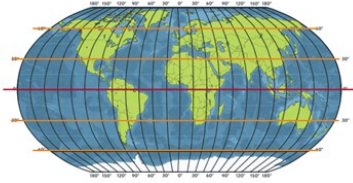


Year 5 Geography

Climate Zones

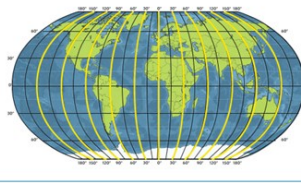
Key Learning

Lines of Latitude



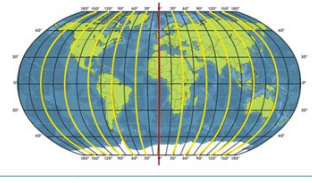
There are **90 lines** of latitude to the North of the equator and **90 lines** to its South.

Lines of Longitude



The lines of longitude are also called Meridians. They all have the same length.

The Prime Meridian

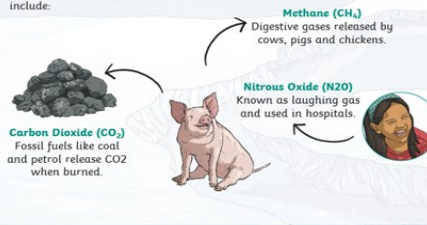


It is the line of longitude which passes through Greenwich, England, is internationally agreed to be the line 0° line of longitude.

Climate change is the name given to changes in weather and temperatures that pose a challenge for us now and in the future. These changes are a result of human activity and are not good for the planet.

Which Gases Cause Global Warming?

Some of the gases that are created through agriculture and manufacturing are particularly harmful to the planet. These are known as greenhouse gases and include:



How Do Greenhouse Gases Change the Climate?

Just like a greenhouse, the Sun's rays can enter the Earth's atmosphere, but then become trapped inside by greenhouse gases.

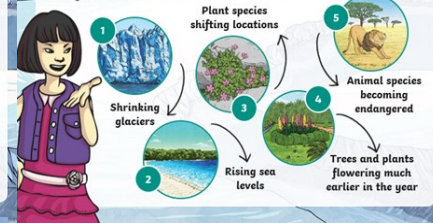
This means that temperatures are slowly increasing all over the planet.

This is known as global warming. These small changes can have a dramatic impact on different places.



What Is Being Affected By Climate Change?

Global warming is the main cause of climate change. The effects of climate change include:



What Is Being Done To Combat Climate Change?

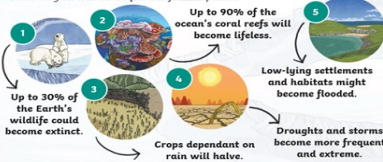
Some important changes have already been taking place around the world. These include:



Many people think that this is not happening quickly enough to make a difference and more action is needed.

What Are the Consequences of Not Doing Enough?

Unless we slow down global warming, experts have predicted there are some very serious consequences for our planet.



Key Vocabulary

Climate Zone	Climate zones are areas with distinct climates.
Northern hemisphere	The half of the Earth which is north of the equator.
Southern hemisphere	The half of the Earth which is south of the equator.
latitude	Invisible lines that circle the earth parallel to the equator. These invisible lines run from east to west.
longitude	Invisible lines that circle the earth parallel to the equator. These invisible lines run from north to south.
Global warming	The rising of the Earth's temperature. Long term shifts in temperature and weather patterns.
Equator	An imaginary line around the centre of the Earth.